

Figure 1: Team Structure and Responsibilities

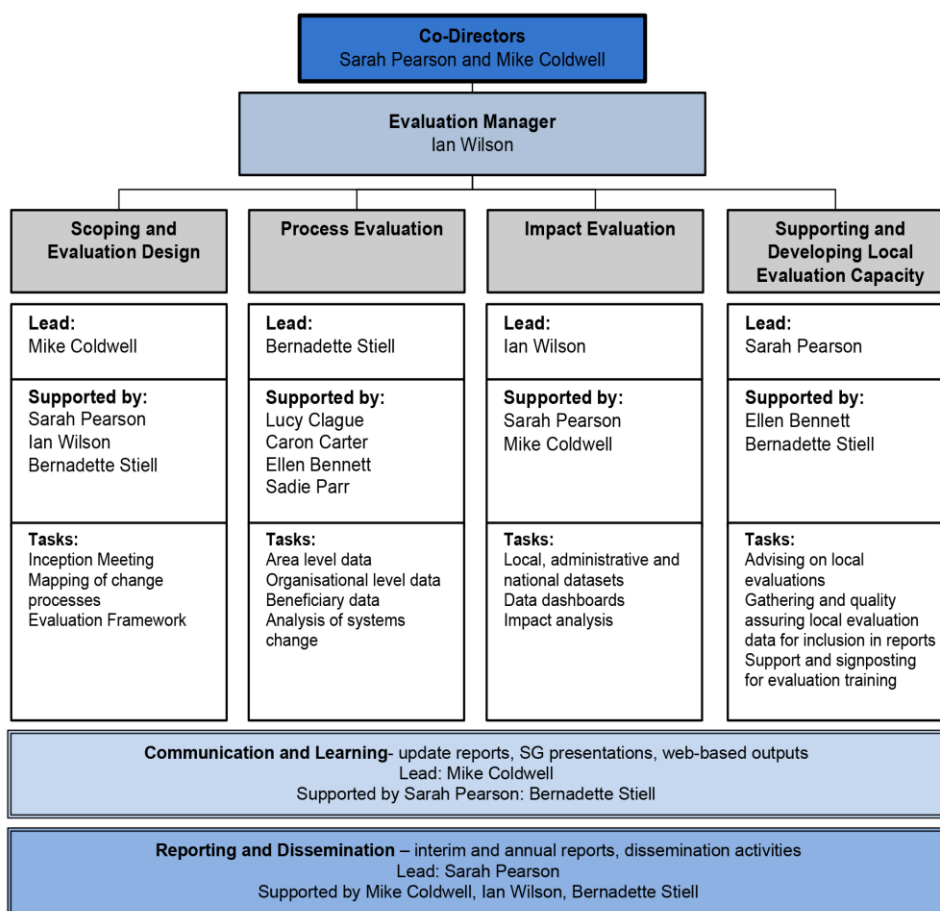


Figure 3: Mapping methods to evaluation questions

	IMPACT	PROCESS		
		Area-level	Organisation level	Beneficiary level
How and to what extent are Communities embodying the key principles of the Children's Communities model?		✓	✓	
Is there evidence of Children's Communities working towards long term systems change?	✓	✓	✓	
How effective are leadership and governance arrangements?		✓	✓	
How are the Communities progressing with developing and operationalising the local strategic vision and theory of change?		✓	✓	
What evidence is there of impacts within services and systems?	✓	✓		
What evidence is there of impacts for children and young people and families?	✓		✓	✓

Figure 2: Simplified, illustrative example of developing a systems-based theory of change to inform evaluation: Wallsend

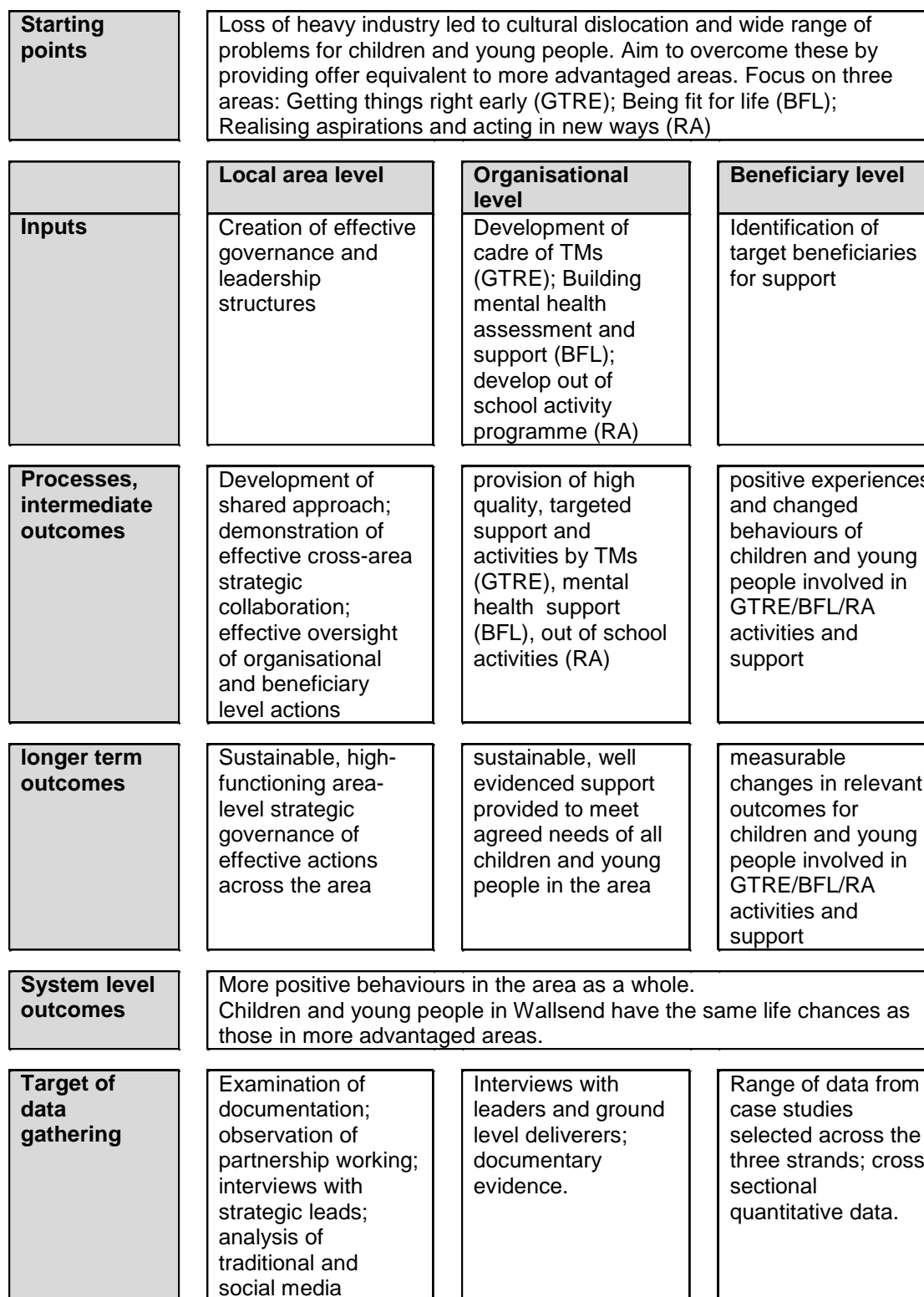


Figure 4: Methods to elicit authentic data...

Figure 5: A framework for assessing Impact and VFM

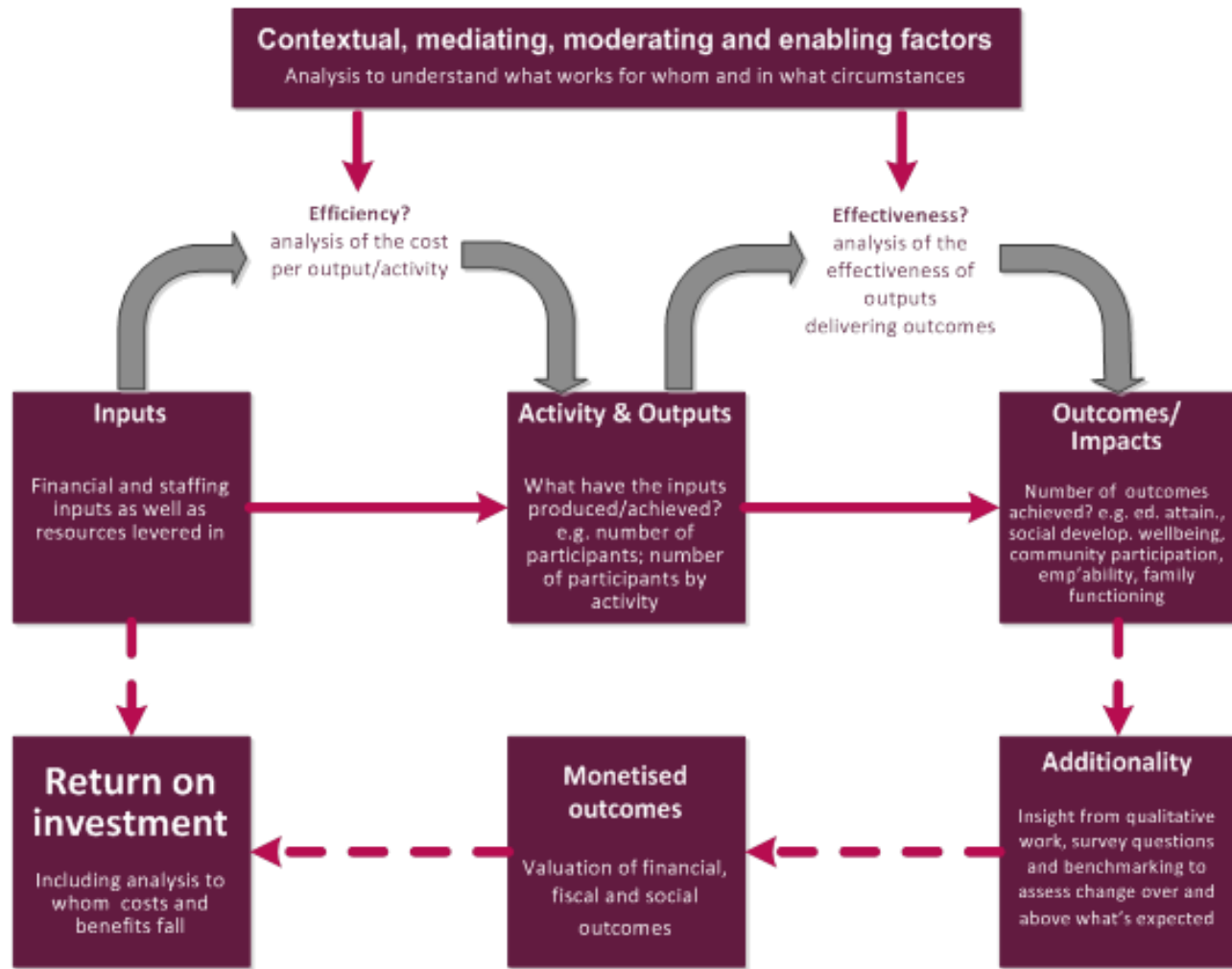


Figure 6: Example of a summary dashboard from the evaluation of Talent Match

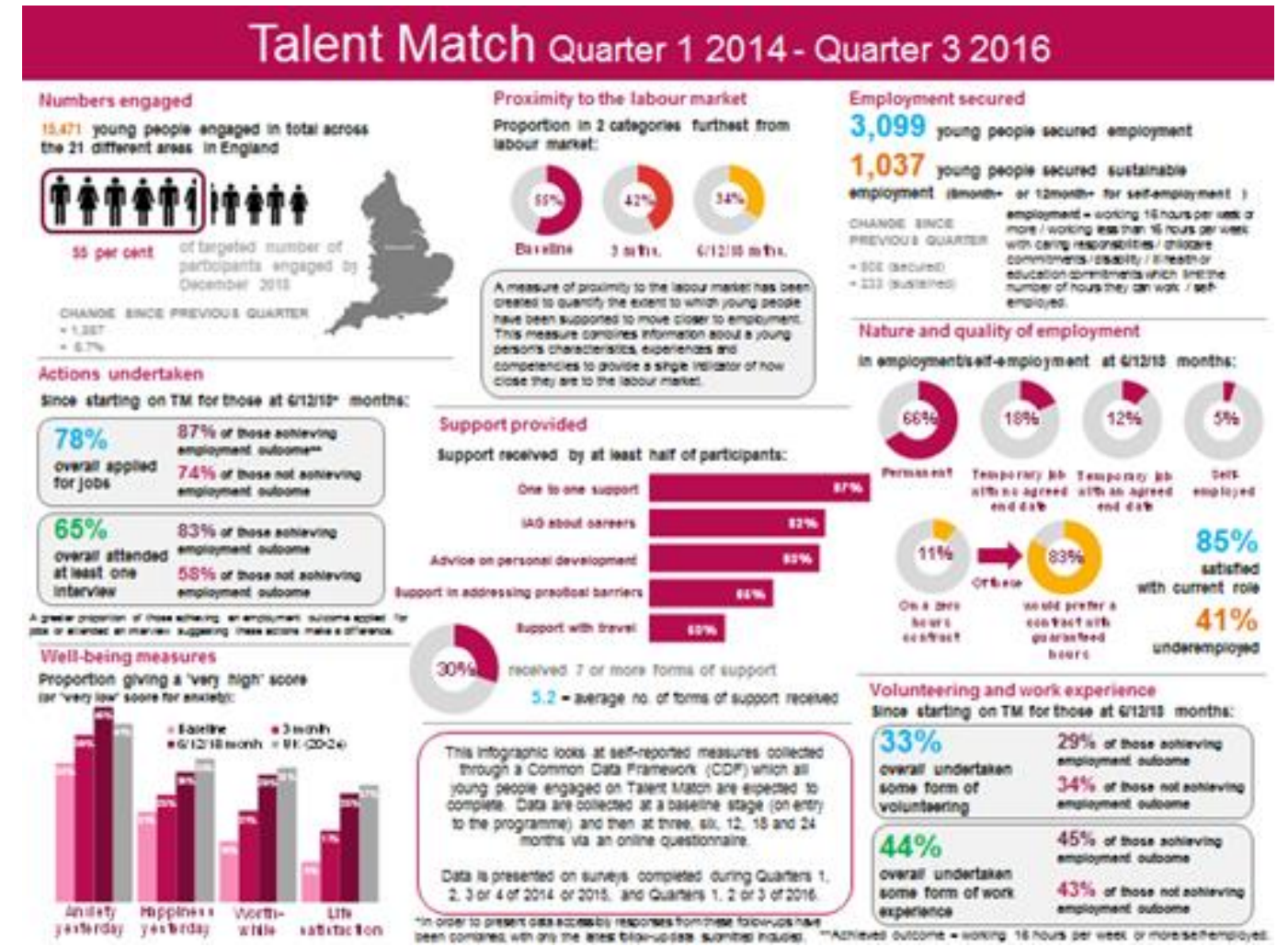


Figure 7: Deliverables

Output	Timing	Purpose
Inception report	Nov 16	Initial document outlining agreed timetable and milestones for delivery, scope and purpose of data collection activities, analysis and outputs
Evaluation framework	Dec 16	Outcomes of local mapping, research questions, outcomes and indicators
Update reports	Every two months	Short, concise updates on progress and emerging findings to be shared by email with SCUK and Children's Communities
Web outputs	4 per year	Thematic outputs suitable for sharing on website and highlighting learning and good practice from Children's Communities - determined with SCUK and Children's Communities - possible for use of video and photographic evidence
Participation in learning exchanges and days	2 per year	Bringing evaluation findings into established learning events, could include thematic presentations and facilitation/ support for capacity building - focus on improving practice, content to be determined with SCUK and Children's Communities
Presentations to evaluation steering group	3 per year	Presentations on progress and findings to elicit feedback and guidance from steering group
Interim reports	Annual (June 2017, 2018 and 2019)	Annual summaries of progress and emerging findings
Annual reports	December 2017 and December 2018	Bringing together process and impact evaluation findings and highlighting key learning - suitable for publication. Separate summary for wide circulation to external audiences